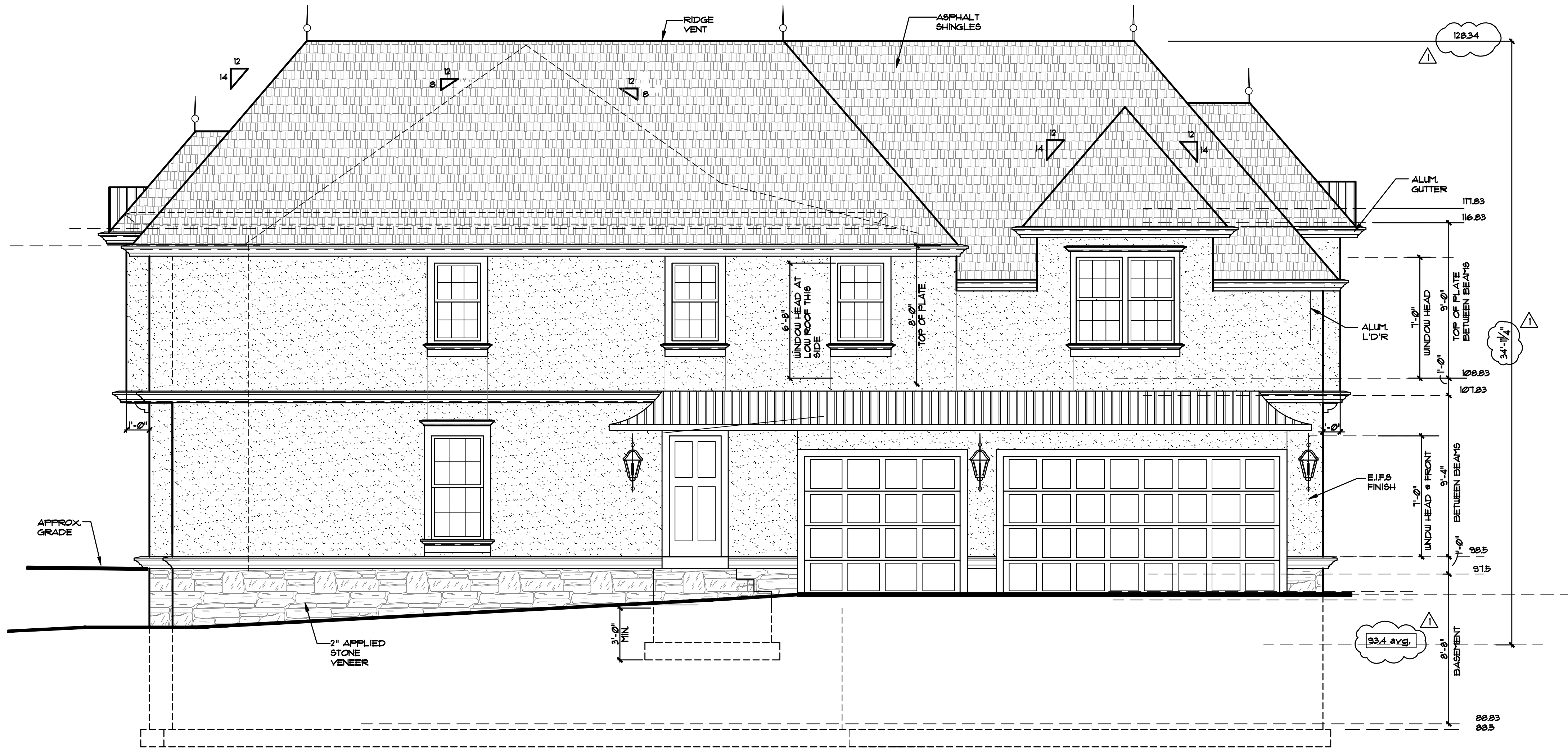


WINDOW SCHEDULE			
	MANUFACTURER/ CATALOG NO.	ROUGH OPENING	REMARKS
1	ANDERSEN WINDOWS 400 SERIES DOUBLEHUNG TW 210410-2	5'-11 3/8" w. x 5'-0 1/8" h.	
2	ANDERSEN WINDOWS 400 SERIES CASEMENT CW26 EGRESS	4'-9" w. x 6'-0 3/8" h.	
3	ANDERSEN WINDOWS 400 SERIES CASEMENT CW16 EGRESS	2'-4 1/8" w. x 6'-0 3/8" h.	
4	ANDERSEN WINDOWS 400 SERIES CASEMENT CW26 EGRESS	4'-9" w. x 6'-0 3/8" h.	
5	ANDERSEN WINDOWS 400 SERIES CASEMENT CW26	4'-9" w. x 6'-0 3/8" h.	
6	ANDERSEN WINDOWS 400 SERIES EGRESS DOUBLEHUNG TW 210510	3'-0 3/8" w. x 6'-0 1/8" h.	
7	ANDERSEN WINDOWS 400 SERIES EGRESS DOUBLEHUNG TW 210510 - 2	5'-11 3/8" w. x 6'-0 1/8" h.	
8	ANDERSEN WINDOWS 400 SERIES DOUBLEHUNG TW 26510 - 2	5'-3 3/8" w. x 6'-0 1/8" h.	
9	ANDERSEN WINDOWS 400 SERIES DOUBLEHUNG TW 24510 - 2	4'-11 3/8" w. x 6'-0 1/8" h.	
10	ANDERSEN WINDOWS 400 SERIES DOUBLEHUNG TW 20510	2'-2 1/2" w. x 6'-0 1/8" h.	
11	ANDERSEN WINDOWS 400 SERIES CASEMENT C34	6'-0 3/8" w. x 4'-0 1/2" h.	
12	ANDERSEN WINDOWS 400 SERIES CASEMENT CX114	3'-0 1/2" w. x 4'-0 1/2" h.	
13	ANDERSEN WINDOWS 400 SERIES- DOUBLEHUNG WDH 26410	2'-8 1/8" w. x 5'-0 1/8" h.	
14	ANDERSEN WINDOWS 400 SERIES - AFCW 21 OVER CASEMENT CW25 EGRESS	4'-9" w. x 1-7 1/16" h. OVER 4'-9" w. x 5'-0 3/8" h.	
15	ANDERSEN WINDOWS 400 SERIES - EGRESS CASEMENTS C15	2'-4 1/8" w. x 5'-0 3/8" h.	
16	ANDERSEN WINDOWS 400 SERIES CASEMENT CW25 EGRESS	4'-9" w. x 5'-0 3/8" h.	
17	ANDERSEN WINDOWS 400 SERIES FIXED ARCH AFFW 5055	4'-11 1/4" w. x 5'-4 13/16" h.	
18	ANDERSEN WINDOWS 400 SERIES DOUBLEHUNG WDH 2642	2'-8 1/8" w. x 4'-4 1/8" h.	
19	ANDERSEN WINDOWS 400 SERIES DOUBLEHUNG WDH 210410-2	5'-11 3/8" w. x 5'-0 1/8" h.	
20	ANDERSEN WINDOWS 400 SERIES - AFCW 21 OVER CASEMENT CW25 EGRESS	4'-9" w. x 1-7 1/16" h. OVER 4'-9" w. x 5'-0 3/8" h.	
21	ANDERSEN WINDOWS 400 SERIES DOUBLEHUNG TW 2642	2'-8 1/8" w. x 4'-4 1/8" h.	
22	ANDERSEN WINDOWS 400 SERIES - AFCW 21 OVER CASEMENT CW245 EGRESS	4'-9" w. x 1-7 1/16" h. OVER 4'-9" w. x 4'-5 3/8" h.	
23	ANDERSEN WINDOWS 400 SERIES DOUBLEHUNG WDH 2642 - 2	5'-3 3/8" w. x 4'-4 1/8" h.	
24	ANDERSEN WINDOWS 400 SERIES-AFCW 21 OVER CASEMENT CW25 EGRESS	4'-9" w. x 1-7 1/16" h. OVER 4'-9" w. x 5'-0 3/8" h.	
25	ANDERSEN WINDOWS 400 SERIES DOUBLEHUNG TW 24410 - 2	4'-11 3/8" w. x 5'-0 1/8" h.	
26	ANDERSEN WINDOWS 400 SERIES DOUBLEHUNG TW 2642	2'-8 1/8" w. x 4'-4 1/8" h.	
27	ANDERSEN WINDOWS 400 SERIES ARCH WINDOW AFFW 601	5'-11 1/4" w. x 1'-9 7/16" h.	AT ROOF - FRONT
28	ANDERSEN WINDOWS 400 SERIES AWNING AN31	3'-0 1/2" w. x 1'-9" h.	
29	ANDERSEN WINDOWS 400 SERIES EGRESS DOUBLEHUNG TW 210510	3'-0 3/8" w. x 6'-0 1/8" h.	

NOTE: PROVIDE TEMPERED GLAZING AT ALL BATHROOM WINDOWS, INCLUDING OVER TUBS AND ALL BATHROOM FIXTURES.



RIGHT SIDE ELEVATION

SCALE : 1/4" = 1'-0"

- 4 4-3-12 MISCELLANEOUS REVISIONS
STRUCTURAL
- 3 3-21-12 MISCELLANEOUS REVISIONS
- 2 3-19-12 MISCELLANEOUS REVISIONS
- 1 3-14-12 MISCELLANEOUS REVISIONS
MOD. HT. & SECTION, BSMT.

HEINTZ & FIORE • LLC
 ARCHITECTS • AIA
 87 woodland road
 short hills • new jersey • 07078
 973•467•1240 fax 973•376•0963

BRONSHTEYN RESIDENCE
 15 ARDEN PLACE
 SHORT HILLS, NJ 07078

drawing title :
RIGHT SIDE ELEVATION

ROBERT B. HEINTZ • AIA
 architect : NJ - C 4352
 planner : NJ - U 01553
 DONALD R. FIORE • AIA
 architect : NJ - A1 10410

job no. : 21204
 date : 3-7-12
 scale : AS NOTED
 drawn by : JSK
 drawing :
A-5