

**TABLE R602.2(1) FASTENER SCHEDULE FOR STRUCTURAL MEMBERS**

DESCRIPTION OF BUILDING ELEMENTS	NUMBER AND TYPE OF FASTENERS	SPACING OF FASTENERS
Joist to sill or girder, toe nail	3-8d	—
1" x 6" subfloor or less to each joist, face nail	2-8d	—
2" subfloor to joist or girder, blind and face nail	2-16d	—
Sole plate to joist or blocking, face nail	1-6d	16" o.c.
Top or sole plate to stud, end nail	2-16d	—
Double stud, face nail	3-8d or 2-16d	—
Stud to sole plate, toe nail	1-6d	24" o.c.
Double top plate, face nail	1-6d	24" o.c.
Sole plate to joist or blocking at braced wall panels	3-16d	16" o.c.
Double top plates, minimum 48-inch offset of end joists, face nail in lapped area	8-16d	16" o.c.
Blocking between joists or rafters to top plate, toe nail	3-8d	—
Rim joist to top plate, toe nail	8d	6" o.c.
Top plates, laps at corners and intersections, face nail	2-10d	—
Build-up header, two pieces with 1/2" spacer	1-6d	16" o.c. along each edge
Continued header, two pieces	3-8d	16" o.c. along each edge
Ceiling joists to plate, toe nail	4-8d	—
Continuous header to stud, toe nail	3-10d	—
Ceiling joist to parallel rafters, face nail	3-10d	—
Kafer to plate, toe nail	2-16d	—
1" brace to each stud and plate, face nail	2-8d	—
1" x 6" sheathing to each bearing, face nail	2 staples, 1 3/4"	—
1" x 8" sheathing to each bearing, face nail	2 staples, 1 3/4"	—
Wider than 1" x 8" sheathing to each bearing, face nail	3 staples, 1 3/4"	—
Build-up corner studs	4 staples, 1 3/4"	—
Build-up girders and beams, 2-inch lumber layers	1-6d	24" o.c.
2" planks	2-16d	Nail each layer as follows: 32" o.c. at top and bottom and staggered. Two nails at ends and at each splice.
Roof rafters to ridge, valley or hip rafters: toe nail	4-16d	—
face nail	3-16d	—
Rafter ties to rafters, face	3-8d	—
Wood structural panels, subfloor, roof and wall sheathing to framing and particleboard wall sheathing to framing	6d common nail (subfloor, wall) 8d common nail (roof)	6 12d
1/2" x 1/2"	6d common nail	6 12d
1/2" x 1"	8d common nail	6 12d
1 1/4" x 1 1/4"	10d common nail or 8d deformed nail	6 12

(continued)

**TABLE R602.3(1)-continued FASTENER SCHEDULE FOR STRUCTURAL MEMBERS**

DESCRIPTION OF BUILDING MATERIALS	DESCRIPTION OF FASTENERS**	Edges (inches)	Intermediate supports** (inches)
Other wall sheathing*	1 1/2" galvanized roofing nail 6d common nail staple 16 ga., 1 1/2" long	3	6
1/2" regular cellululosic fiberboard/sheathing	1 1/2" galvanized roofing nail 8d common nail staple 16 ga., 1 1/2" long	3	6
1/2" structural cellululosic fiberboard	1 1/2" galvanized roofing nail 8d common nail staple 16 ga., 1 1/2" long	3	6
1/2" gypsum sheathing	1 1/2" galvanized roofing nail; 6d common nail; staple galvanized, 1 1/2" long; 1 1/4" screws, Type W or S	4	8
5/8" gypsum sheathing	1 1/2" galvanized roofing nail; 8d common nail; staple galvanized, 1 1/2" long; 1 1/4" screws, Type W or S	4	8
Wood structural panels, combination subfloor/underlayment to framing	6d deformed nail or 8d common nail	6	12
1/2" and less	8d common nail or 8d deformed nail	6	12
1/2"-1"	8d common nail or 8d deformed nail	6	12
1 1/4"-1 1/2"	10d common nail or 8d deformed nail	6	12

For SI: 1 inch = 25.4 mm, 1 foot = 304.8 mm, 1 mile per hour = 1.609 km/h.

a. All nails are smooth-common, box or deformed shanks except where otherwise stated.

b. Staples are 16 gauge wire and have a minimum 7/16-inch diameter crown width.

c. Nails shall be spaced at not more than 6 inches on center at all supports where spans are 48 inches or greater.

d. Four-foot-by-8-foot or 4-foot-by-9-foot panels shall be applied vertically.

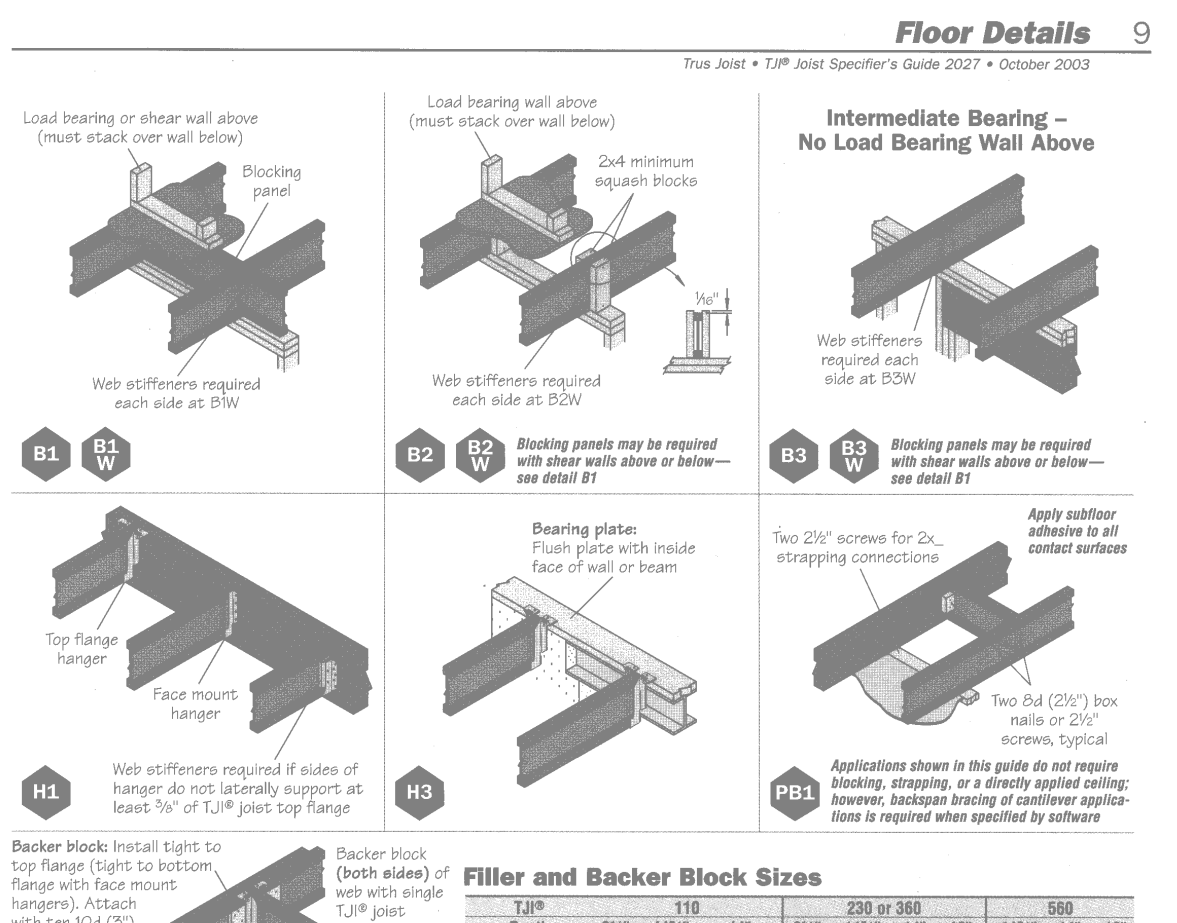
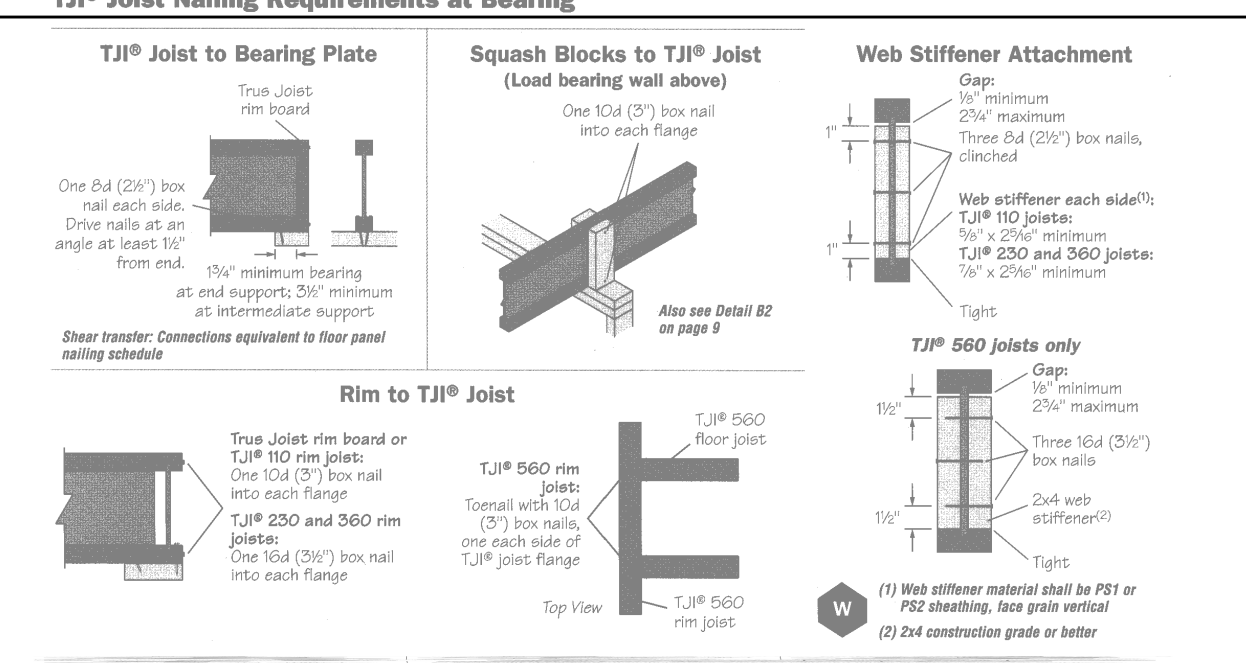
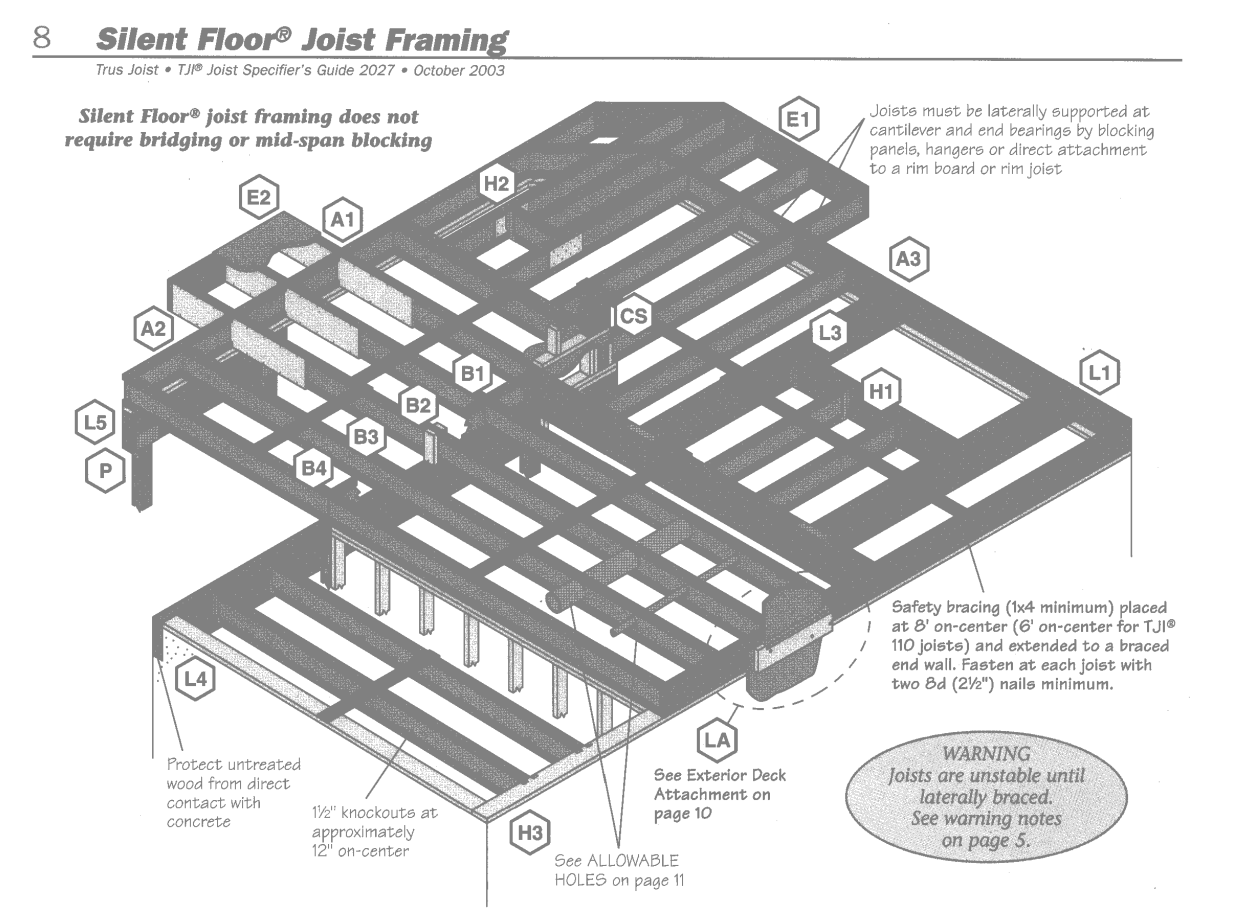
e. Spacing of fasteners not included in this table shall be based on Table R602.3(1).

f. For regions having basic wind speed of 110 mph or greater, 8d deformed nails shall be used for attaching plywood and wood structural panel roof sheathing to framing within minimum 48-inch distance from gable end walls, if mean roof height is more than 25 feet, up to 35 feet maximum.

g. For regions having basic wind speed of 100 mph or less, nails for attaching wood structural panel roof sheathing to gable end wall framing shall be spaced 6 inches on center. When basic wind speed is greater than 100 mph, nails for attaching panel roof sheathing to intermediate supports shall be spaced 6 inches on center for minimum 48-inch distance from ridges, eaves and gable end walls, and 4 inches on center on gable end wall framing.

h. Gypsum sheathing shall conform to ASTM C 79 and shall be installed in accordance with GA 253. Fiberboard sheathing shall conform to either AIA 194.1 or ASTM C 208.

i. Spacing of fasteners on floor sheathing panel edges applies to panel edges supported by framing members and at all floor perimeters only. Spacing of fasteners on roof sheathing panel edges applies to panel edges supported by framing members and at all roof perimeters. Blocking of roof or floor sheathing panel edges perpendicular to the framing members shall not be required except at intersection of adjacent roof planes. Floor and roof perimeter shall be supported by framing members or solid blocking.

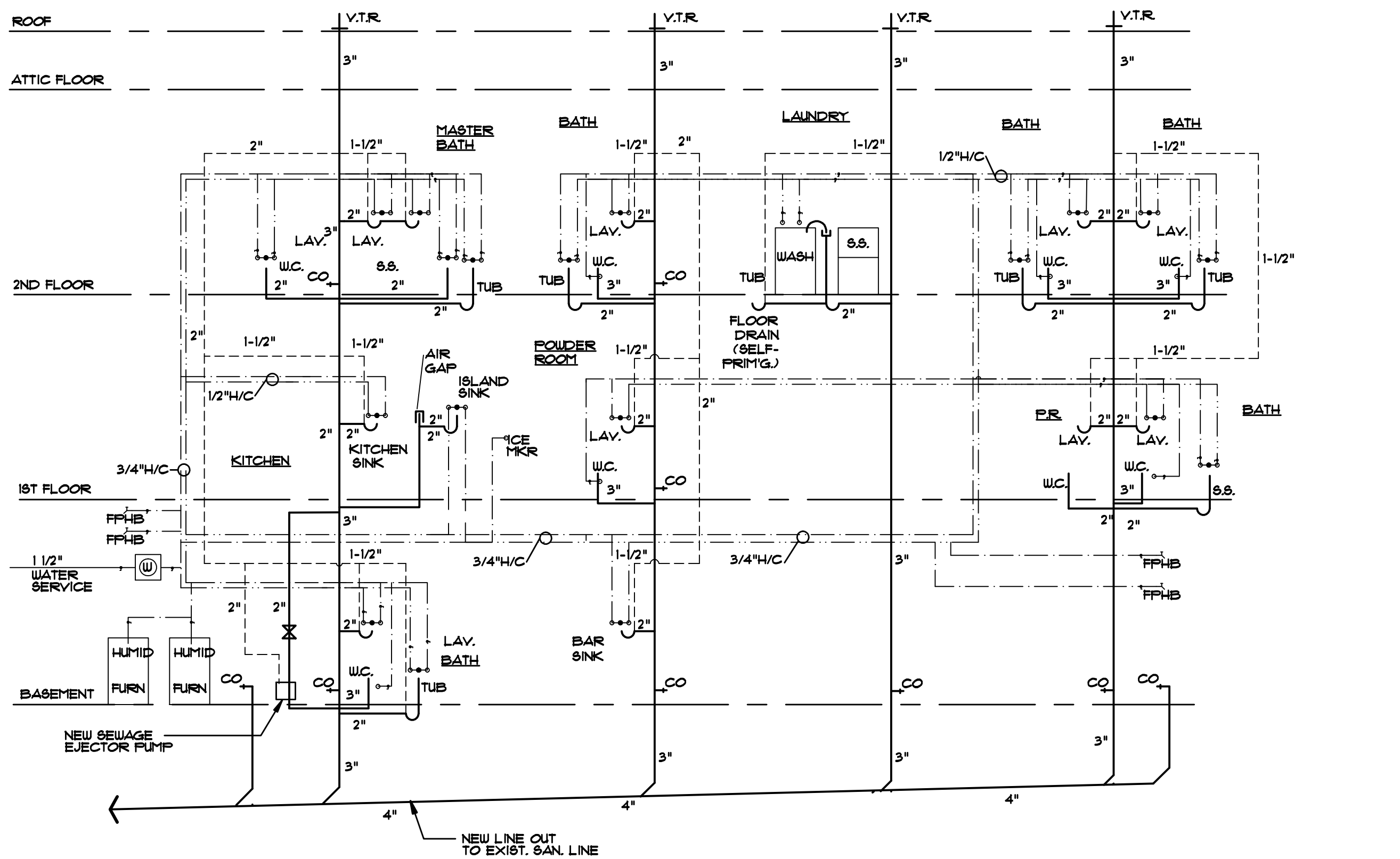


**Fastening of Floor Panels to TJI® Joist Flanges and TJI Joist Rim Board**

Panel Size	110	230, 260, and 360	580
8d (2 1/2") box	2"	2"	2"
8d (2 1/2") common	2"	2"	2"
16d (3 1/2") box	2"	2"	2"
16d (3 1/2") common	2"	2"	2"
18d (2 1/2") common	2"	2"	2"

**General Notes**

- Maximum spacing of nails is 18" on-center for TJI® 110 joists, and 24" on-center for TJI® 230, 260, and 360 joists.
- If more than one row of nails is used, the rows must be offset at least 1/2" and staggered.
- 14 ga. staples may be substituted for 8d (2 1/2") nails if minimum penetration of 1" is achieved.
- Table also applies for the attachment of TJI® rim joists and blocking panels to the wall plate.



**PLUMBING RISER DIAGRAM**  
NOT TO SCALE WITH WATER RISER INFO

NOTE: ALL WATER LINES TO BATH GROUPS = 3/4" ALL WATER LINES TO INDIV. FIXTURES = 1/2"

1-24-13 MISCELLANEOUS REVISIONS

**HEINTZ & FIORE • LLC**  
ARCHITECTS • AIA

87 woodland road  
short hills • new jersey • 07078  
973-467-1240 fax 973-376-0963

**BRONSHTEYN RESIDENCE**  
20 ALAN DRIVE  
SHORT HILLS, NJ 07078

drawing title: **WALL SECTION, PLUMBING RISER DIAGRAM, FRAMING NOTES**

job no.: 21244 scale: AS NOTED date: 01-23-13 drawing: A-7

ROBERT B. HEINTZ • AIA architect: NJ - C 4352  
DONALD R. FIORE • AIA architect: NJ - U 01553  
drawing: NJ - A1 10410