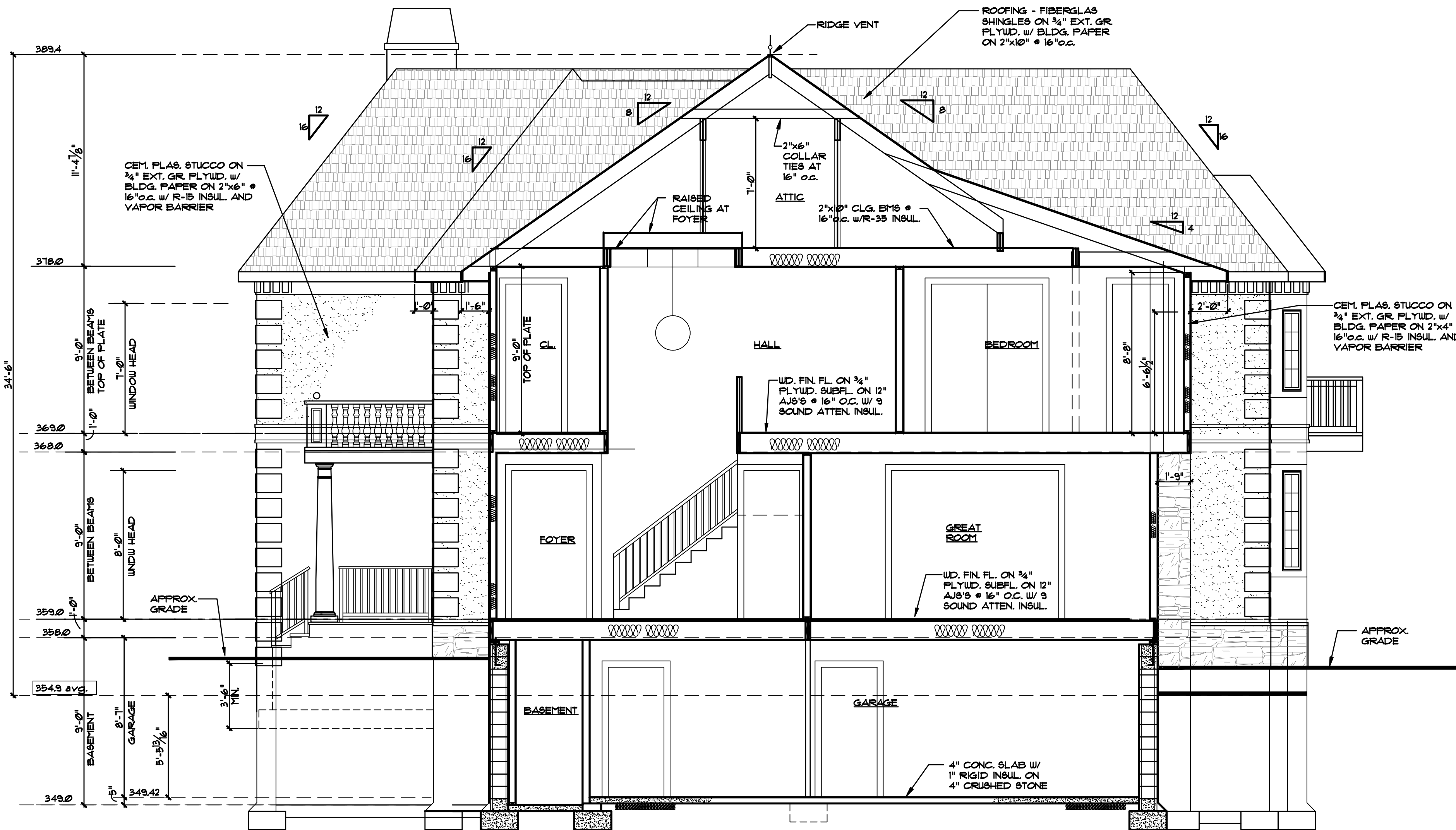


GAS RISER DIAGRAM
NO SCALE



A BUILDING SECTION
A-8 SCALE: 1/4" = 1'-0"

BULLETIN 11-1

NOTIFIED by the local construction official upon application for a new home's Certificate of Occupancy, the Energy Rating Study certificate of compliance (COC) must be submitted to the local construction official for review.

4. COMPLIANCE WITH PREScriptive PACKAGED PROVISIONS: The applicant must identify the energy package proposed for the use of a prescriptive package based on climate zone, location and window-to-wall ratio. Following are the applicable portions of Table 402.1.1 of the 2007 IECC that can be applied to the proposed package. The applicant must identify that he/she is using the prescriptive package and that the corresponding details are shown in a proposed building plan and that the details are shown in the sections found in the appropriate part of the COC. The applicant must also identify that the details are shown in the sections found in the COC.

TABLE 402.1.1

Climate Zone	Minimum U-Factor*	Minimum R-Value*	Minimum R-Value*	Minimum R-Value*	Minimum R-Value*	Minimum R-Value*	Minimum R-Value*	Minimum R-Value*	Minimum R-Value*
1	0.35	0.6	3.8	13.0	13.0	13.0	13.0	13.0	13.0
2	0.35	0.6	3.8	13.0	13.0	13.0	13.0	13.0	13.0
3	0.35	0.6	3.8	13.0	13.0	13.0	13.0	13.0	13.0
4	0.35	0.6	3.8	13.0	13.0	13.0	13.0	13.0	13.0
5	0.35	0.6	3.8	13.0	13.0	13.0	13.0	13.0	13.0
6	0.35	0.6	3.8	13.0	13.0	13.0	13.0	13.0	13.0
7	0.35	0.6	3.8	13.0	13.0	13.0	13.0	13.0	13.0
8	0.35	0.6	3.8	13.0	13.0	13.0	13.0	13.0	13.0
9	0.35	0.6	3.8	13.0	13.0	13.0	13.0	13.0	13.0
10	0.35	0.6	3.8	13.0	13.0	13.0	13.0	13.0	13.0

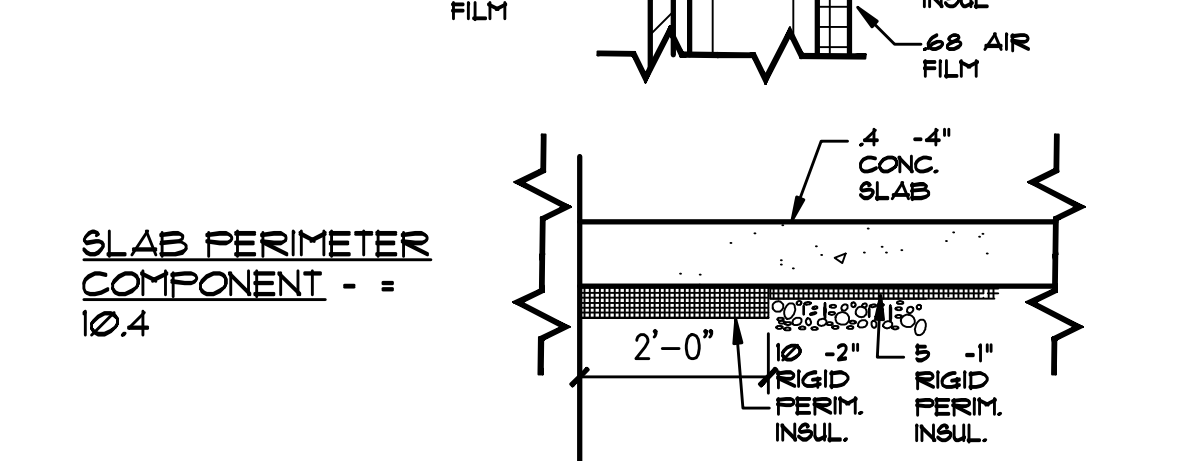
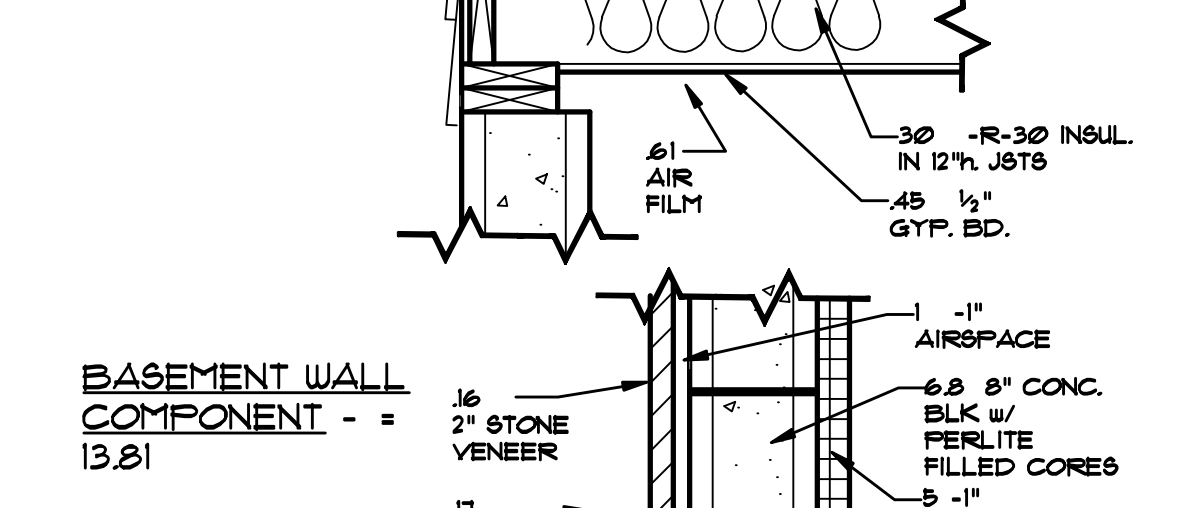
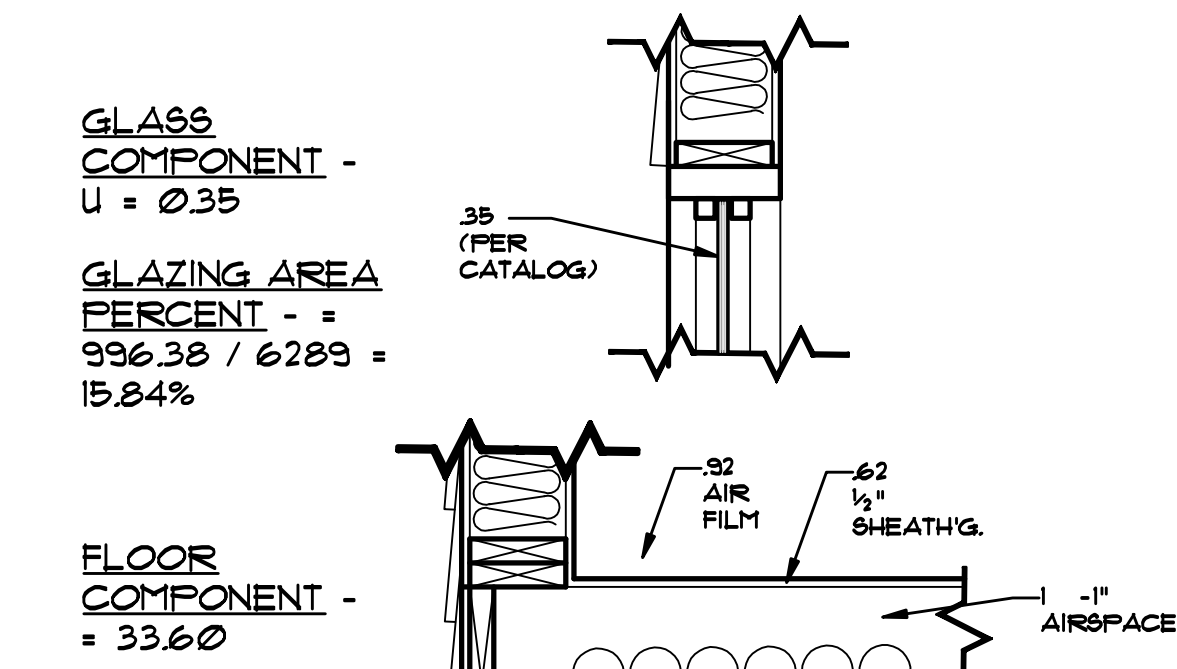
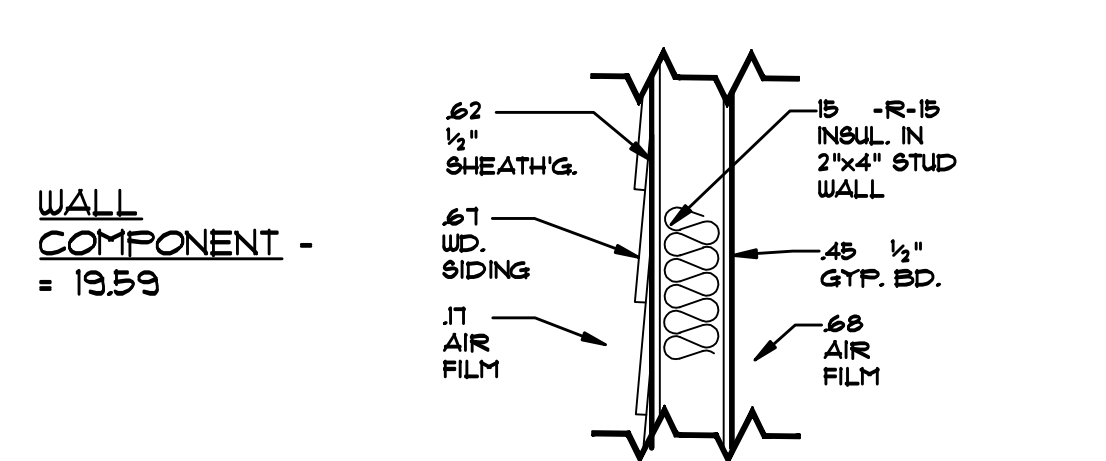
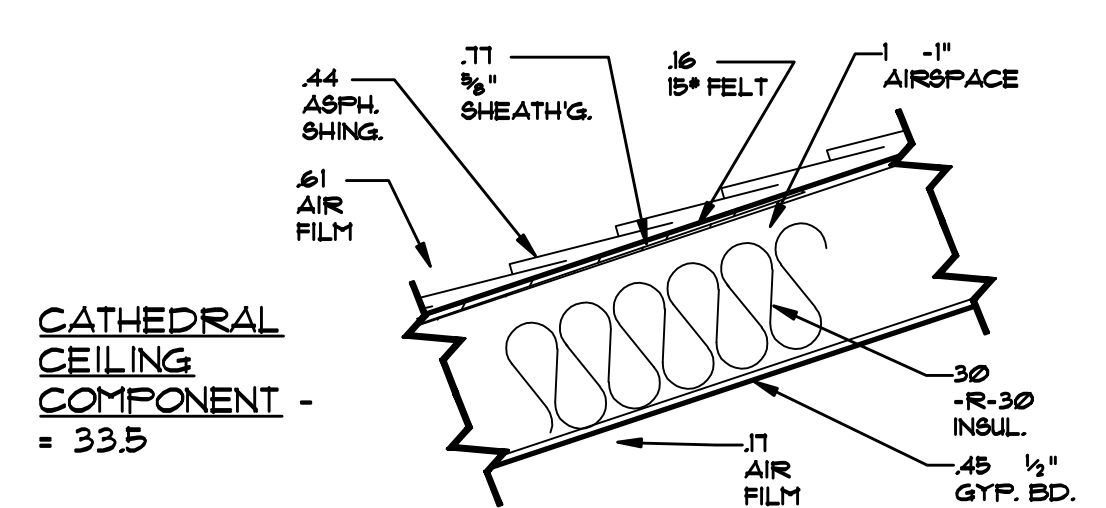
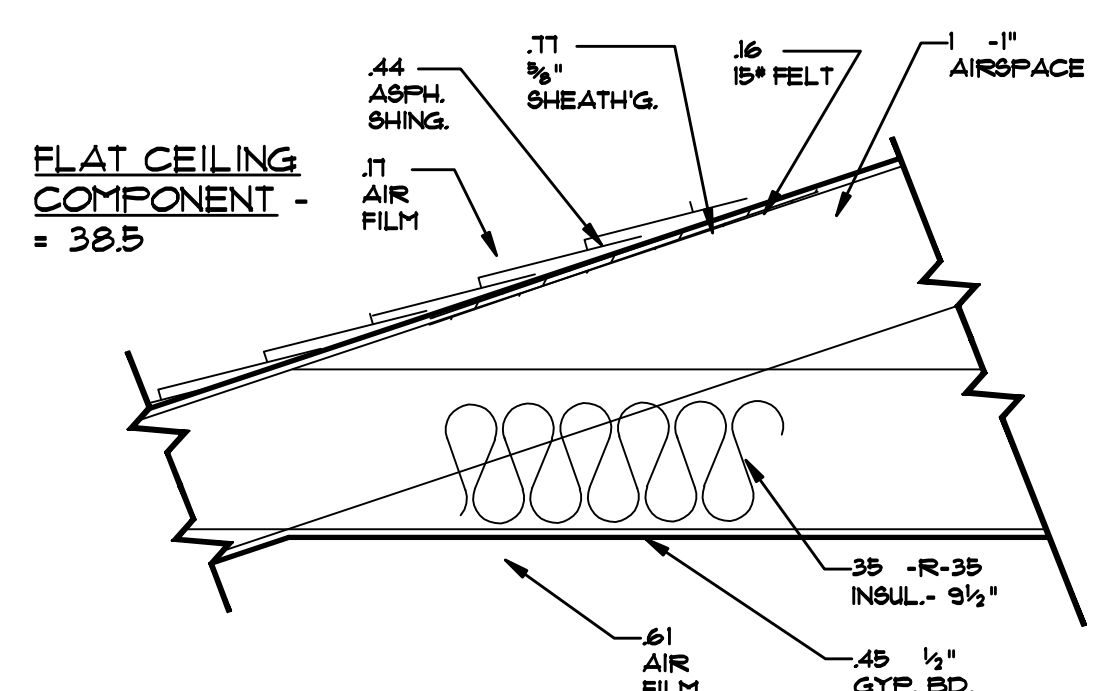
REGARDLESS OF THE COMPLIANCE METHOD CHOSEN, THE DOCUMENTATION MUST BE SIGNED AND SEALED BY A DESIGN PROFESSIONAL, EXCEPT THAT IN CLASS 3 BUILDINGS AS DESCRIBED IN N.J.A.C. 5:23-4.3A(4), THE DOCUMENTATION MAY BE SIGNED BY THE MECHANICAL CONTRACTOR, AND IN THE CASE OF A SINGLE-FAMILY DETACHED DWELLING WHERE THE HOMEOWNER RESIDES OR INTENDS TO RESIDE IN THE DWELLING, THE HOMEOWNER MAY SIGN THE ENERGY CODE COMPLIANCE DOCUMENTATION.

COMMERCIAL BUILDINGS ARE DEFINED AS ALL BUILDINGS OTHER THAN LOW-RISE RESIDENTIAL BUILDINGS. COMPLIANCE MUST BE IN ACCORDANCE WITH THE ENERGY SUBCODE AND 2007 ASHRAE STANDARD 90.1, AND FOR COMMERCIAL BUILDINGS, MAY BE DEMONSTRATED IN ONE OF TWO WAYS:

1. COMPLIANCE WITH CALCULATIONS: This is very much like the calculations for low-rise residential buildings mentioned above. However, the applicant must also provide information on the type of lighting installed and its usage.

2. COMPLIANCE WITH PREScriptive PACKAGED PROVISIONS: This is very much like the prescriptive provisions mentioned above. However, the applicant must also include the type of lighting installed and its usage. The COMcheck software is available as a free download from the website: <http://www.enr.com/comcheck>. The 2007 ASHRAE Standard 90.1 version of the software should be used and can be located under "Code" in the menu bar at top. A compliance report is generated by the software program, which is to be submitted with the permit application. It must meet or exceed the 2007 ASHRAE (package) based on the applicable climate zone location.

Page 3 of 8



1-24-13 MISCELLANEOUS REVISIONS

HEINTZ & FIORE • LLC
ARCHITECTS • AIA

87 woodland road
short hills • new jersey • 07078
973-467-1240 fax 973-376-0963

BRONSHTEYN RESIDENCE
20 ALAN DRIVE
SHORT HILLS, NJ 07078

BUILDING TITLE:
**BUILDING SECTION
GAS RISER DIAGRAM
ENERGY CALCULATIONS**

ROBERT B. HEINTZ • AIA
architect : NJ - C 4352
planner : NJ - U 01553
DONALD R. FIORE • AIA
architect : NJ - A1 10410

job no. : 21244 scale : AS NOTED
date : 01-23-13 drawn by : JSK

A-9