

ZERO CLEARANCE
METAL FLUE AS REQ. FOR
FURNACE & FIREPLACE

10'-0"
TO CENTER OF CHIMNEY FLU.

RIDGE VENT
(TYP)

ASPHALT ROOF
SHINGLES (TYP)

ALUMINUM GUTTERS & LEADERS (TYP)

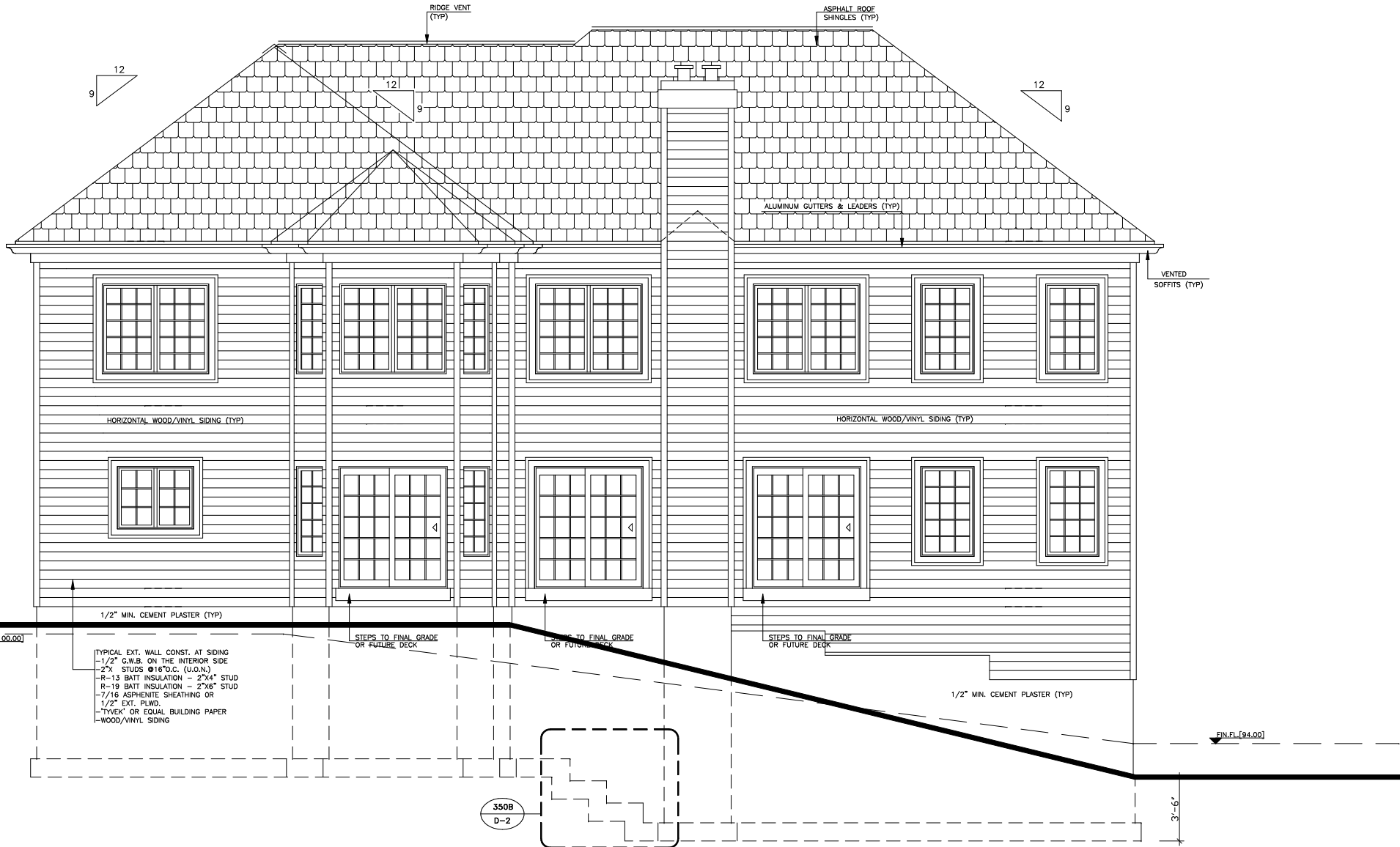
VENTED
SOFFITS (TYP)

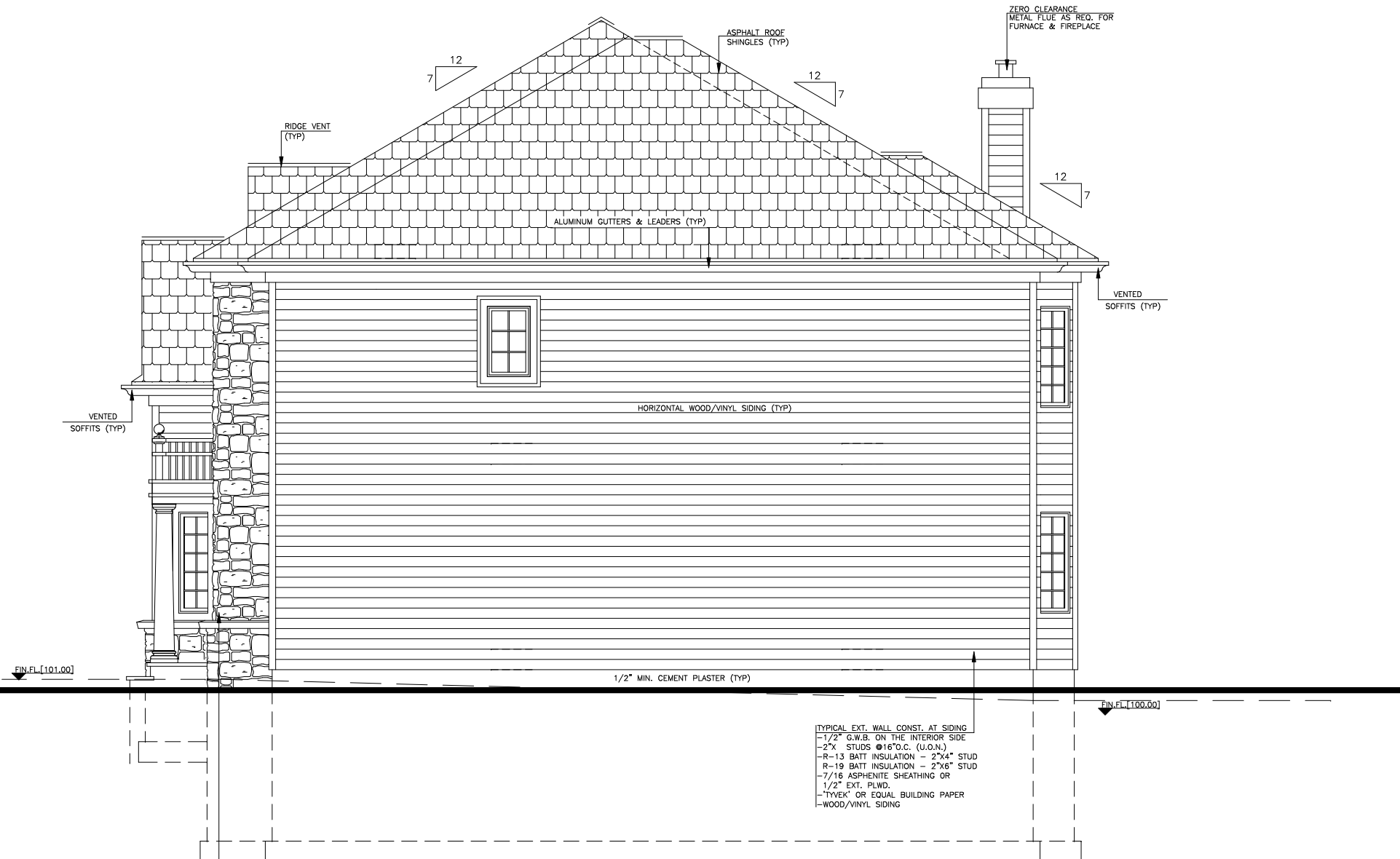
HORIZONTAL WOOD/VINYL SIDING (TYP)

FIN.FL. [94.00]

FIN.FL. [94.00]

TYPICAL EXT. WALL CONST. AT SIDING
 -1/2" G.W.B. ON THE INTERIOR SIDE
 -2" STUDS @16"O.C. (U.O.N.)
 -R-13 BATT INSULATION - 2"x4" STUD
 -R-19 BATT INSULATION - 2"x6" STUD
 -7/16 ASPHENITE SHEATHING OR
 1/2" EXT. PLUG.
 -TYVEK' OR EQUAL BUILDING PAPER
 -WOOD/VINYL SIDING





FIN.FL.[101.00]

FIN.FL.[100.00]

1/2" MIN. CEMENT PLASTER (TYP)

TYPICAL EXT. WALL AT CULTURED STONE CONST.
 -1/2" G.W.B. ON THE INTERIOR SIDE
 -2"X STUDS @16"O.C. (U.O.N.)
 -R-13 BATT INSULATION - 2"X4" STUD
 -R-19 BATT INSULATION - 2"X6" STUD
 -7/16 ASPHENITE SHEATHING OR
 1/2" EXT. PLWD.
 -"TYVEK" OR EQUAL BUILDING PAPER
 -CULTURED STONE ATOP MORTAR SETTING
 BED AND LATH (COBBLEFILLED BY
 CULTURED STONE OR EQUAL) INSTALL IN
 ACCORDANCE WITH MANUFACTURER'S
 RECOMMENDATIONS.

TYPICAL EXT. WALL CONST. AT SIDING
 -1/2" G.W.B. ON THE INTERIOR SIDE
 -2"X STUDS @16"O.C. (U.O.N.)
 -R-13 BATT INSULATION - 2"X4" STUD
 -R-19 BATT INSULATION - 2"X6" STUD
 -7/16 ASPHENITE SHEATHING OR
 1/2" EXT. PLWD.
 -"TYVEK" OR EQUAL BUILDING PAPER
 -WOOD/VINYL SIDING

HORIZONTAL WOOD/VINYL SIDING (TYP)

ALUMINUM GUTTERS & LEADERS (TYP)

ASPHALT ROOF SHINGLES (TYP)

ZERO CLEARANCE METAL FLUE AS REQ. FOR FURNACE & FIREPLACE

RIDGE VENT (TYP)

VENTED SOFFITS (TYP)

VENTED SOFFITS (TYP)

