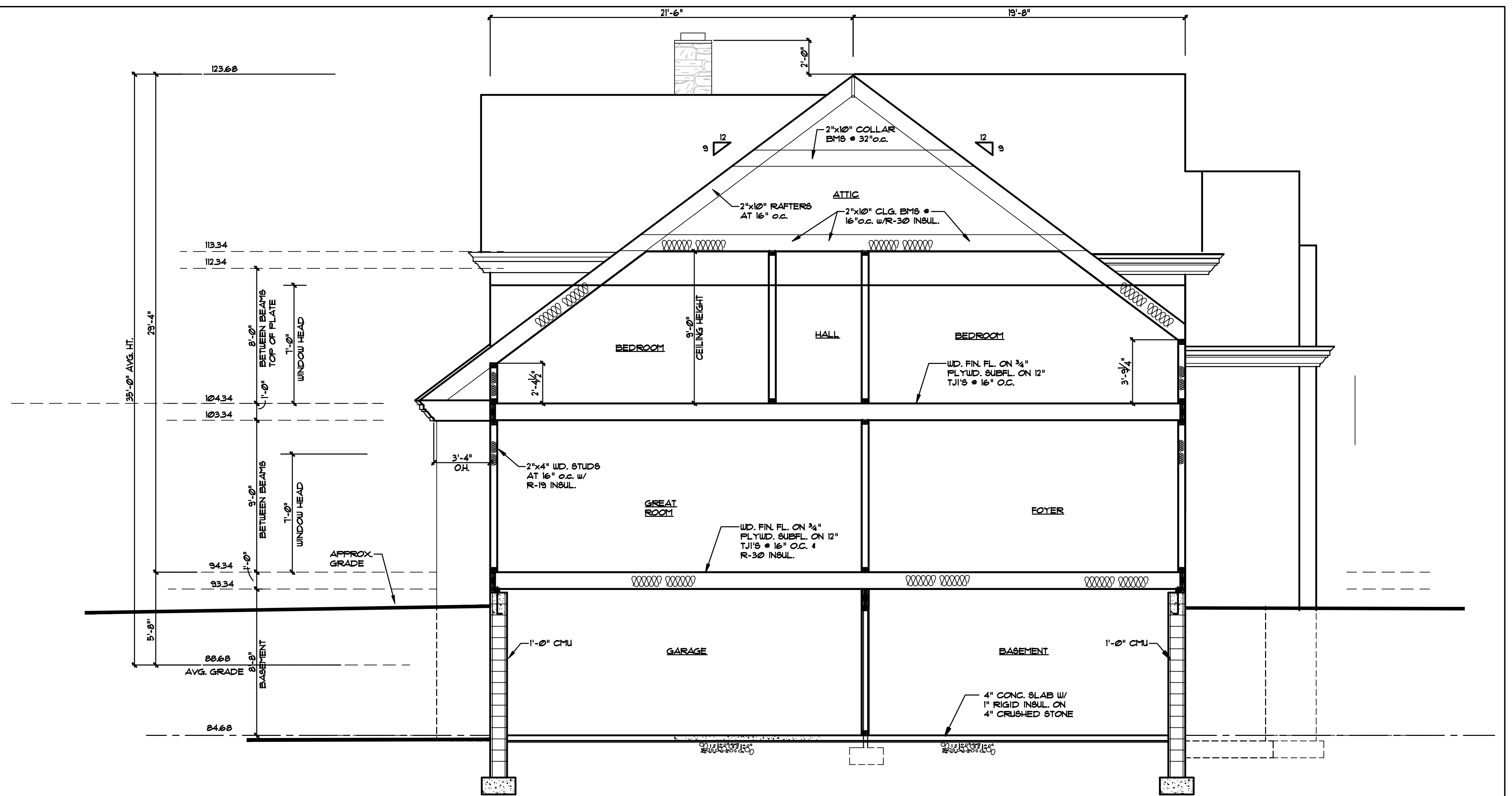


**GAS RISER DIAGRAM**  
NO SCALE

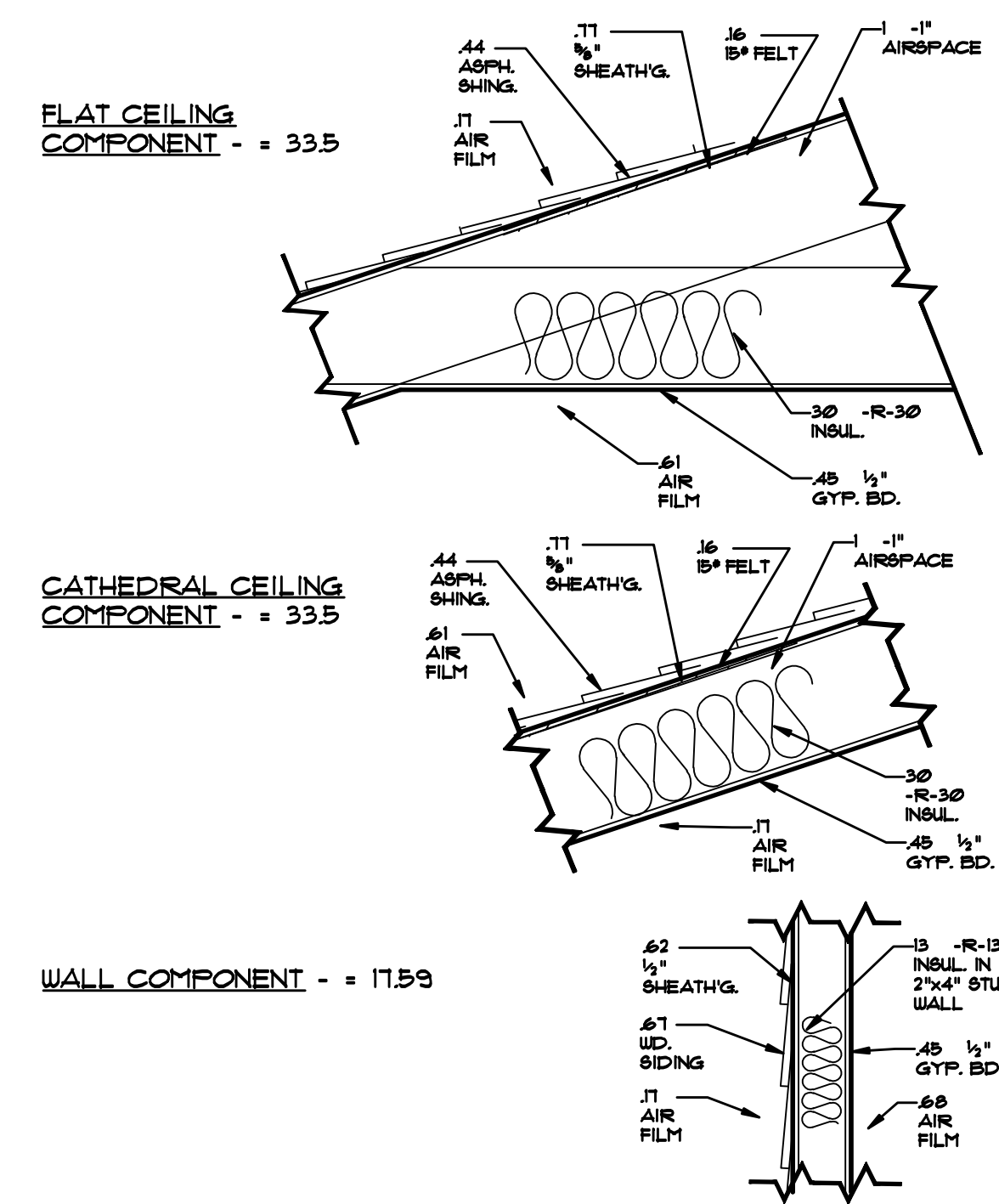


**A-8 BUILDING SECTION**  
SCALE: 1/4" = 1'-0"

Prescriptive Packages 5000 Degree-Day Region  
Single-Family Detached

Package	Maximum		Minimum							Heating/Cooling Equipment Efficiency <sup>8</sup>	UCC Basement Tradeoff
	Glazing Area Percent <sup>1</sup>	Glazing U-Value <sup>2</sup>	Ceiling R-Value <sup>3</sup>	Wall R-Value <sup>4</sup>	Floor R-Value <sup>5</sup>	Basement Wall R-Value <sup>6</sup>	Slab Perimeter R-Value <sup>7</sup>	Crawl Space Wall R-Value <sup>8</sup>			
1	11%	0.50	30	11	19	0	4	19	High Heating		
2	13%	0.50	30	15	19	0	4	19	High Heating		
3	13%	0.45	30	13	19	0	4	19	High Heating		
4	13%	0.40	30	11	19	0	4	19	High Heating		
5	13%	0.35	19	11	19	0	4	19	High Heating		
6	13%	0.30	19	11	19	0	4	19	High Heating		
7	15%	0.45	38	15	30	0	4	19	High Heating		
8	15%	0.40	30	13	19	0	4	19	High Heating		
9	15%	0.35	30	11	19	0	4	19	High Heating		
10	15%	0.30	19	11	19	0	4	19	High Heating		
11	17%	0.40	38	15	30	0	4	19	High Heating		
12	17%	0.35	30	13	19	0	4	19	High Heating		
13	17%	0.30	19	13	19	0	4	19	High Heating		
14	12%	0.65	38	19	19	9	7	17	Normal		
15	12%	0.45	30	13	19	9	7	17	Normal		
16	15%	0.55	38	19	21	10	*	22	Normal		
17	15%	0.40	38	13	19	9	5	16	Normal		
18	18%	0.45	38	19	19	9	7	17	Normal		
19	18%	0.35	38	13	19	9	6	17	Normal		
20	22%	0.40	49	21	19	9	6	17	Normal		
21	12%	0.75	38	11	19	8	2	14	High Heating		
22	12%	0.65	38	13	11	6	0	8	High Heating		
23	15%	0.65	30	13	19	9	2	22	High Heating		
24	15%	0.50	30	13	11	6	0	8	High Heating		
25	18%	0.55	30	13	19	9	2	22	High Heating		
26	18%	0.45	38	13	11	5	0	8	High Heating		
27	22%	0.55	38	17	19	9	2	22	High Heating		
28	22%	0.40	30	13	13	2	10	10	High Heating		
29	12%	0.75	30	13	15	2	14	14	High Heat/Cool		
30	12%	0.65	30	13	13	6	0	10	High Heat/Cool		
31	15%	0.70	30	15	19	9	2	22	High Heat/Cool		
32	15%	0.55	28	13	13	5	2	10	High Heat/Cool		
33	18%	0.55	38	13	13	5	2	14	High Heat/Cool		
34	18%	0.50	38	13	13	6	0	10	High Heat/Cool		
35	22%	0.60	38	17	26	11	8	*	High Heat/Cool		
36	22%	0.45	38	13	15	7	2	12	High Heat/Cool		

\* Indicates that the package cannot be used with that foundation type

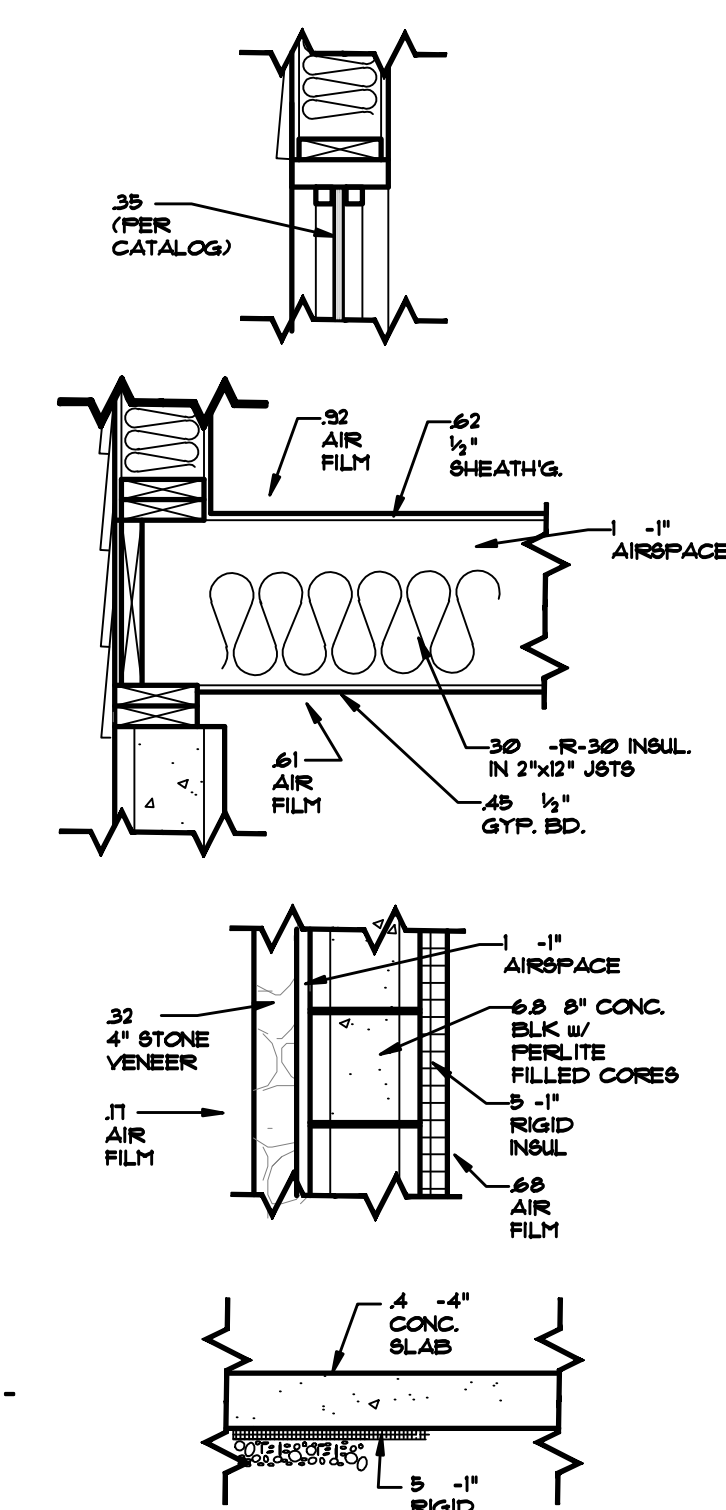


GLASS COMPONENT - U = 0.35  
GLAZING AREA PERCENT - 711 / 4794 = 14.9%

FLOOR COMPONENT - = 33.60

BASEMENT WALL COMPONENT - = 13.91

SLAB PERIMETER COMPONENT - = 5.4



6/1/09 MODIFIED GRADES FOR BLDG HEIGHT CLARIFICATION  
5-6-09 ISSUED FOR PERMIT

**HEINTZ & FIORE • LLC**  
ARCHITECTS • AIA  
87 woodland road  
short hills • new jersey • 07078  
973-467-1240 fax 973-376-0963

RESIDENCE for MR. & MRS. EDWARD RUMMEL  
260 HARTSHORN DRIVE  
SHORT HILLS, NJ

drawing title : **BUILDING SECTION, GAS RISER DIAGRAM, & ENERGY CALCS**

job no. : 2917 scale : AS NOTED  
date : 5-6-09 drawn by : JSK

ROBERT B. HEINTZ • AIA architect : NJ - C 4352  
DONALD R. FIORE • AIA architect : NJ - U 01553  
drawing : **A-8**