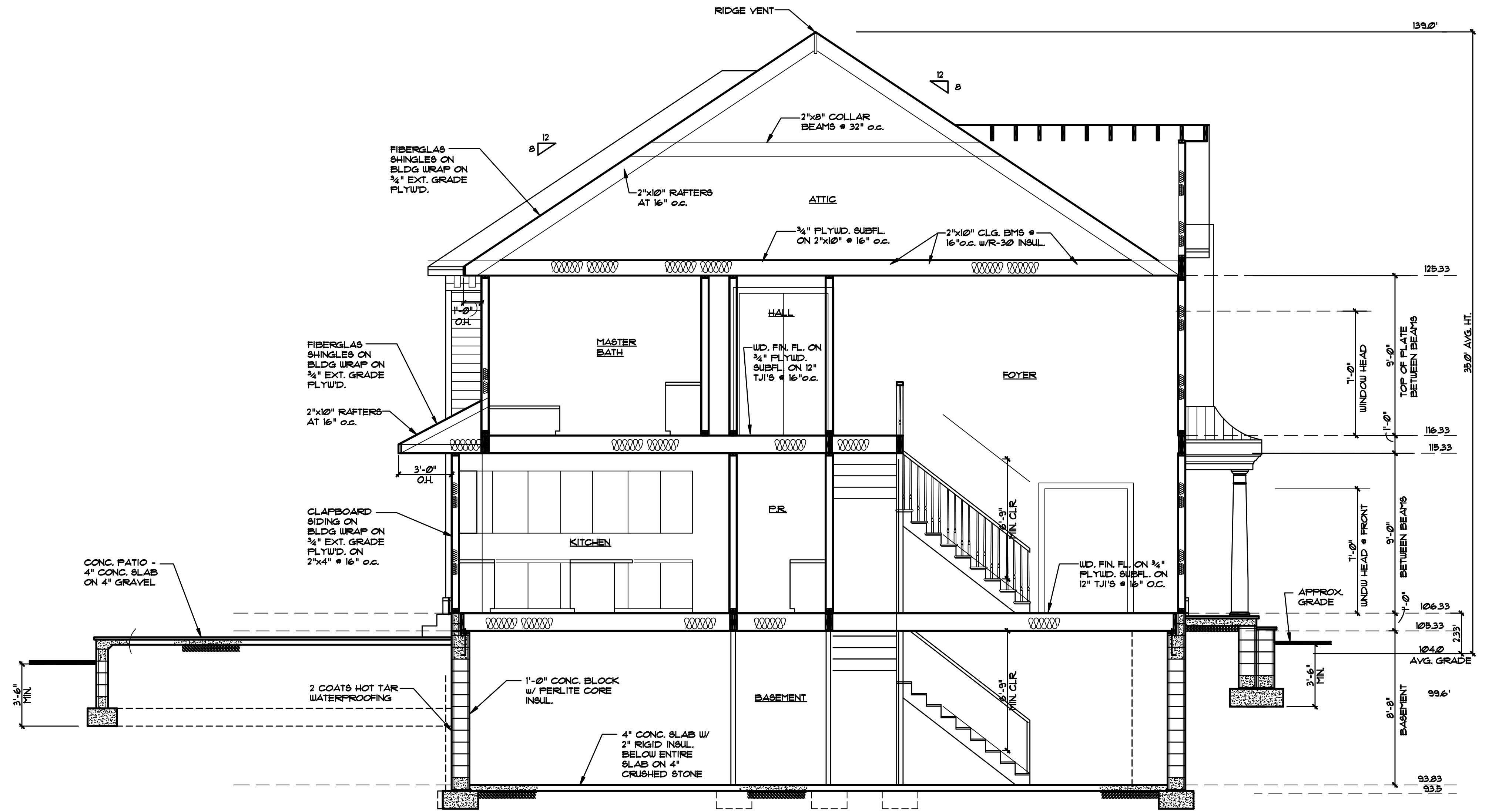


GAS RISER DIAGRAM
NO SCALE



A SECTION
A-8 SCALE: 1/4" = 1'-0"

2006 IECC Prescriptive Packages

Detached One- and Two-Family Dwellings @ Heating Degree Days 4500-4999

Prescriptive Package	Percentage Glazing ¹	Maximum					Minimum								
		Glazing U-factor ²	Ceiling R-value ³	Exterior wall R-value ⁴	Floor R-value ^{5,6}	Basement wall R-value ^{6,7}	Slab perimeter R-value and depth ⁸	Crawl space wall R-value ⁹	Glazing U-factor ²	Ceiling R-value ³	Exterior wall R-value ⁴	Floor R-value ^{5,6}	Basement wall R-value ^{6,7}	Slab perimeter R-value and depth ⁸	Crawl space wall R-value ⁹
1	8%	0.55	R-30	R-13	R-15	R-8	R-2, 2 ft	R-12	0.55	R-30	R-13	R-15	R-8	R-2, 2 ft	R-12
2	12%	0.50	R-38	R-14	R-19	R-9	R-6, 2 ft	R-16	0.45	R-38	R-14	R-19	R-9	R-6, 2 ft	R-16
3	15%	0.45	R-38	R-15	R-19	R-9	R-6, 2 ft	R-16	0.45	R-38	R-14	R-19	R-9	R-6, 2 ft	R-16
4	18%	0.37	R-38	R-15	R-19	R-9	R-6, 2 ft	R-16	0.37	R-38	R-15	R-19	R-9	R-6, 2 ft	R-16
5	20%	0.37	R-38	R-16	R-19	R-9	R-6, 2 ft	R-16	0.37	R-38	R-15	R-19	R-9	R-6, 2 ft	R-16
6	25%	0.33	R-38	R-16	R-19	R-9	R-6, 2 ft	R-16	0.33	R-38	R-15	R-19	R-9	R-6, 2 ft	R-17

Detached One- and Two-Family Dwellings @ Heating Degree Days 5000-5499

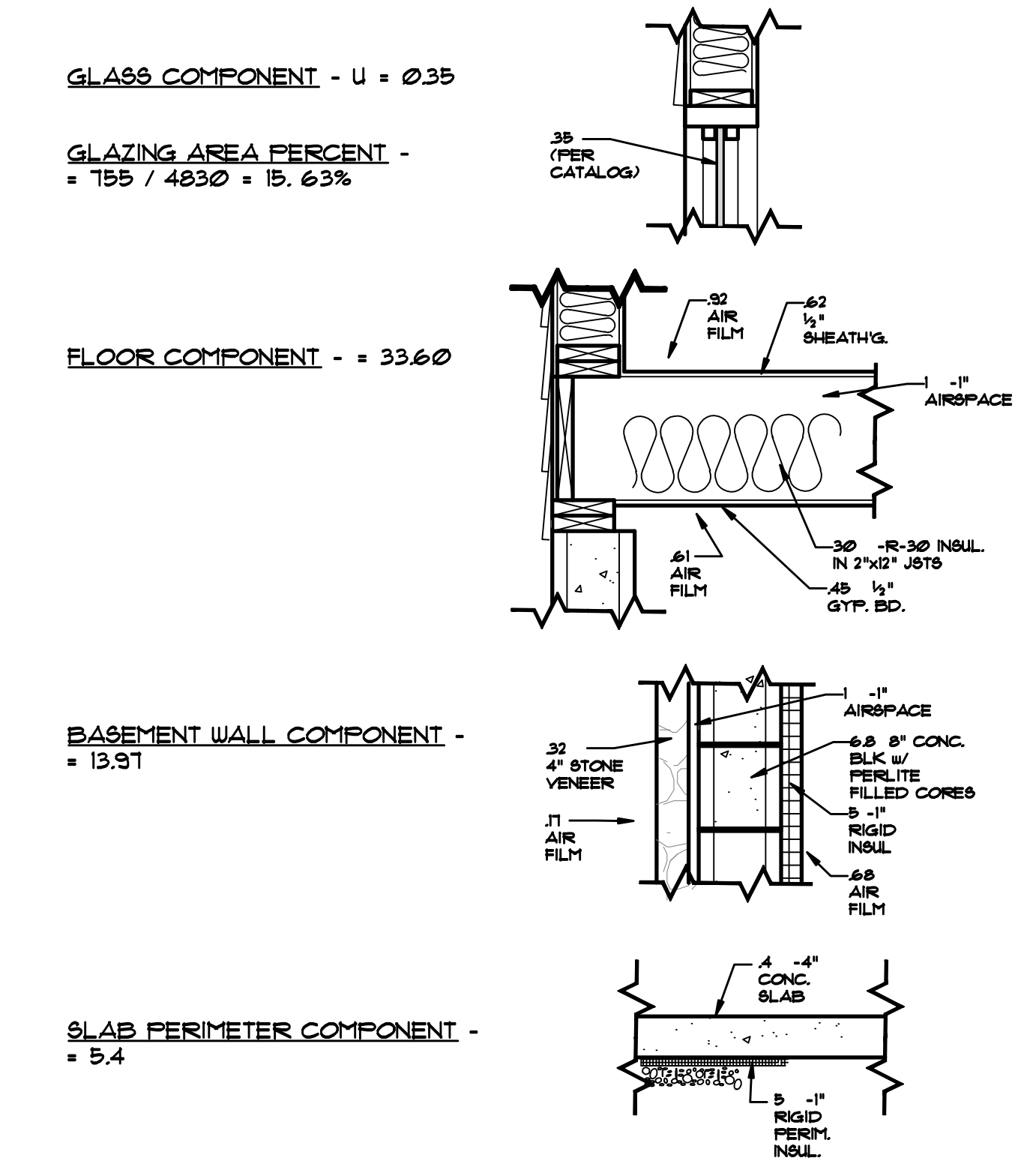
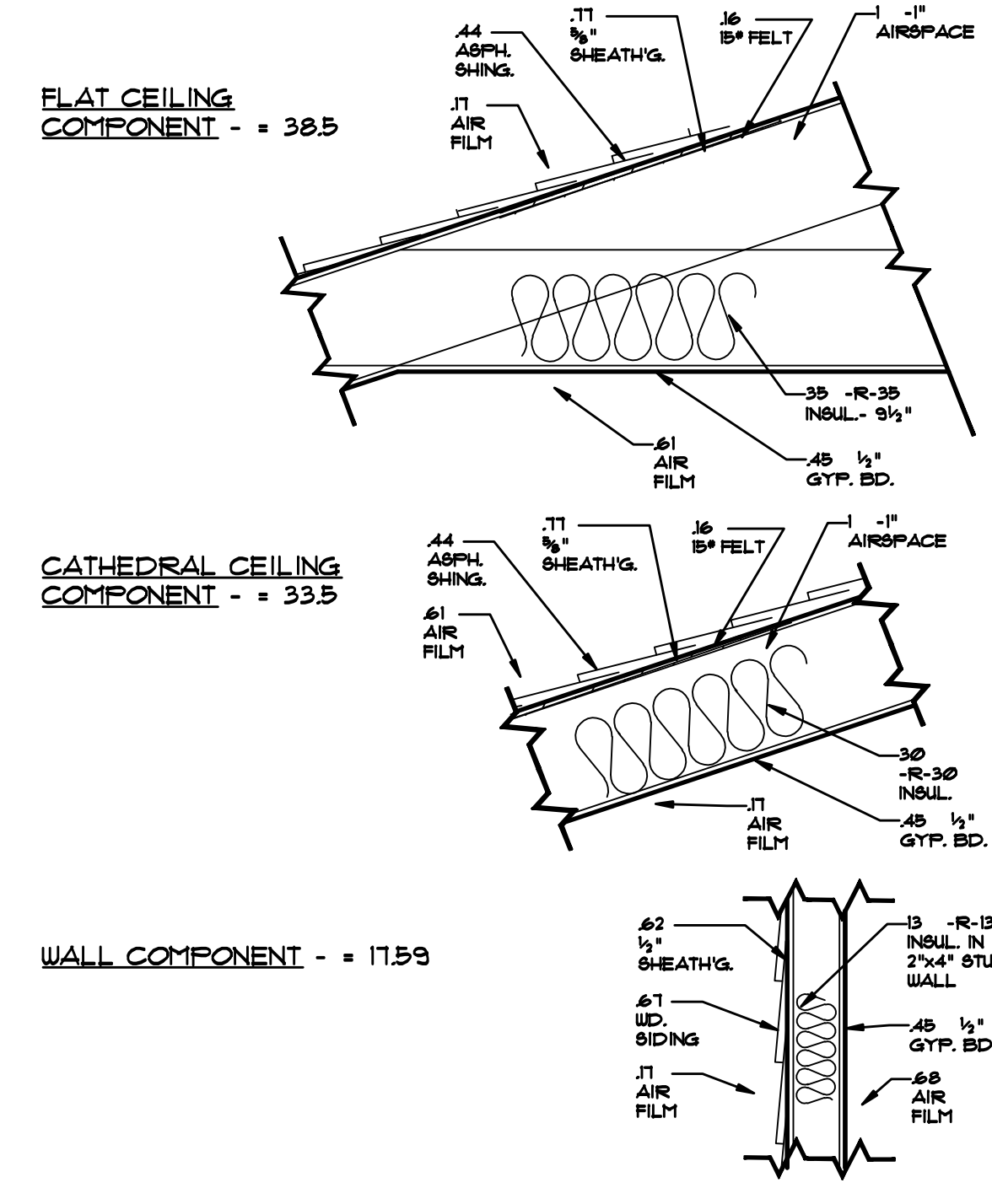
Prescriptive Package	Percentage Glazing ¹	Maximum					Minimum								
		Glazing U-factor ²	Ceiling R-value ³	Exterior wall R-value ⁴	Floor R-value ^{5,6}	Basement wall R-value ^{6,7}	Slab perimeter R-value and depth ⁸	Crawl space wall R-value ⁹	Glazing U-factor ²	Ceiling R-value ³	Exterior wall R-value ⁴	Floor R-value ^{5,6}	Basement wall R-value ^{6,7}	Slab perimeter R-value and depth ⁸	Crawl space wall R-value ⁹
1	8%	0.52	R-30	R-13	R-19	R-9	R-7, 2 ft	R-16	0.52	R-30	R-13	R-19	R-9	R-7, 2 ft	R-16
2	12%	0.45	R-38	R-14	R-19	R-9	R-6, 2 ft	R-16	0.45	R-38	R-14	R-19	R-9	R-6, 2 ft	R-16
3	15%	0.45	R-38	R-15	R-19	R-9	R-6, 2 ft	R-16	0.45	R-38	R-14	R-19	R-9	R-6, 2 ft	R-16
4	18%	0.37	R-38	R-15	R-19	R-9	R-6, 2 ft	R-16	0.37	R-38	R-15	R-19	R-9	R-6, 2 ft	R-16
5	20%	0.35	R-38	R-16	R-19	R-9	R-6, 2 ft	R-16	0.35	R-38	R-15	R-19	R-9	R-6, 2 ft	R-16
6	25%	0.29	R-38	R-16	R-19	R-9	R-6, 2 ft	R-16	0.29	R-38	R-15	R-19	R-9	R-6, 2 ft	R-17

Detached One- and Two-Family Dwellings @ Heating Degree Days 5500-5999

Prescriptive Package	Percentage Glazing ¹	Maximum					Minimum								
		Glazing U-factor ²	Ceiling R-value ³	Exterior wall R-value ⁴	Floor R-value ^{5,6}	Basement wall R-value ^{6,7}	Slab perimeter R-value and depth ⁸	Crawl space wall R-value ⁹	Glazing U-factor ²	Ceiling R-value ³	Exterior wall R-value ⁴	Floor R-value ^{5,6}	Basement wall R-value ^{6,7}	Slab perimeter R-value and depth ⁸	Crawl space wall R-value ⁹
1	8%	0.45	R-38	R-13	R-19	R-9	R-7, 2 ft	R-16	0.45	R-38	R-13	R-19	R-9	R-7, 2 ft	R-16
2	12%	0.40	R-38	R-14	R-19	R-9	R-6, 2 ft	R-16	0.40	R-38	R-14	R-19	R-9	R-6, 2 ft	R-16
3	15%	0.40	R-38	R-15	R-19	R-9	R-6, 2 ft	R-16	0.40	R-38	R-14	R-19	R-9	R-6, 2 ft	R-16
4	18%	0.37	R-38	R-15	R-19	R-9	R-6, 2 ft	R-16	0.37	R-38	R-15	R-19	R-9	R-6, 2 ft	R-16
5	20%	0.33	R-49	R-20	R-19	R-10	R-7, 2 ft	R-17	0.33	R-49	R-19	R-19	R-10	R-7, 2 ft	R-17
6	25%	0.27	R-38	R-19	R-21	R-10	R-9, 2 ft	R-17	0.27	R-38	R-19	R-21	R-10	R-9, 2 ft	R-22

Detached One- and Two-Family Dwellings @ Heating Degree Days 6000-6499

Prescriptive Package	Percentage Glazing ¹	Maximum					Minimum								
		Glazing U-factor ²	Ceiling R-value ³	Exterior wall R-value ⁴	Floor R-value ^{5,6}	Basement wall R-value ^{6,7}	Slab perimeter R-value and depth ⁸	Crawl space wall R-value ⁹	Glazing U-factor ²	Ceiling R-value ³	Exterior wall R-value ⁴	Floor R-value ^{5,6}	Basement wall R-value ^{6,7}	Slab perimeter R-value and depth ⁸	Crawl space wall R-value ⁹
1	8%	0.45	R-38	R-16	R-19	R-10	R-7, 4 ft	R-16	0.45	R-38	R-16	R-19	R-10	R-7, 4 ft	R-16
2	12%	0.40	R-38	R-18	R-19	R-10	R-6, 4 ft	R-16	0.40	R-38	R-18	R-19	R-10	R-6, 4 ft	R-16
3	15%	0.35	R-38	R-18	R-21	R-10	R-9, 4 ft	R-20	0.35	R-38	R-18	R-21	R-10	R-9, 4 ft	R-20
4	18%	0.34	R-49	R-22	R-19	R-10	R-8, 4 ft	R-17	0.34	R-49	R-22	R-19	R-10	R-8, 4 ft	R-17
5	20%	0.31	R-49	R-24	R-19	R-10	R-7, 4 ft	R-17	0.31	R-49	R-24	R-19	R-10	R-7, 4 ft	R-17
6	25%	0.25	R-49	R-24	R-21	R-10	R-9, 4 ft	R-20	0.25	R-49	R-24	R-21	R-10	R-9, 4 ft	R-20



HEINTZ & FIORE • LLC
ARCHITECTS • AIA

87 woodland road
short hills • new jersey • 07078
973-467-1240 fax 973-376-0963

SINGLE FAMILY RESIDENCE
29 DORSET LANE
MILLBURN, NJ

drawing title:
**BUILDING SECTION
GAS RISER DIAGRAM
ENERGY CALCULATIONS**

job no.: 21024 scale: AS NOTED
date: 6-22-10 drawn by: JSK

ROBERT B. HEINTZ • AIA
architect: NJ - C 4352
planner: NJ - U 01553
DONALD R. FIORE • AIA
architect: NJ - A1 10410

drawing:
A-8